

FREE CCAT PRACTICE TEST WITH SOLUTIONS

This simulation contains 30-questions and you have 9-minutes to try to answer all of them. The style of the questions and their level corresponds exactly to the original CCAT that you will need to pass for your recruitment.

For this free test, you need to answer correctly as fast as possible, because you only have 18 seconds per question, as with [the real CCAT](#). If you don't know how to answer a question, don't get stuck on it and move on to the next question. Don't answer the questions randomly, as you may be able to go back to them in case you have time left.

QUESTION 1

1 cookbook is sold for \$9.50. Marie intends to buy 3 cookbooks. How much does she have to pay when she goes to the checkout at the store?

- A. \$22
- B. \$23.50
- C. \$26.50
- D. \$28
- E. \$28.50

EXPLANATION

A cookbook costs \$9.50, so 3 cookbooks cost \$28.50.

QUESTION 2

Martin wants to buy a chocolate ice cream. The price of an ice ball is \$1.50 but there is a promotion and for 3 balls purchased, the fourth is for free. How much will Martin have to pay if he buys four scoops of ice cream for himself and four for his girlfriend?

- A. \$8
- B. \$8.50
- C. \$9
- D. \$10
- E. \$11.50

EXPLANATION

By purchasing 8 scoops of ice cream in total, Martin pays only the price equivalent to 6 scoops. So, he pays 6 times \$1.50, which equals to \$9.

QUESTION 3

Which of the following values is the smallest?

- A. 0.04
- B. 0.09
- C. 1.12
- D. 1.004
- E. 0.05

EXPLANATION

The smallest value is 0.04.

QUESTION 4

Which of the following values is the highest?

- A. 1.008
- B. 0.009
- C. 1.08
- D. 1.004
- E. 1.8

EXPLANATION

The greatest value is 1.8.

QUESTION 5

20 is 20% of what number?

- A. 50
- B. 100
- C. 200
- D. 250
- E. 300

EXPLANATION

20% of 100 equals 20.

QUESTION 6

48 is 80% of what number?

- A. 50
- B. 55
- C. 60
- D. 65
- E. 70

EXPLANATION

80% of 60 equals 48. The easiest way to do this calculation is to report to 10, 8 versus 10, then multiply by 6 to get to 48 and 60.

QUESTION 7

On Monday, 50 children bought a ticket for the ghost train attraction. If 30% more children bought a ticket to this attraction on the following Tuesday, how many tickets were sold during those two days?

- A. 30
- B. 65
- C. 85
- D. 115
- E. 165

EXPLANATION

30% of 50 equals 15% of 100, so 15. By adding up the 50 children on Monday and 50-15 children on Tuesday, we get a total of 115 children.

QUESTION 8

One kilo of Persian rice is sold for 5 cents per kilo. For 4 kilos purchased, the seller offers a 20% discount. If Josephine bought 12 kilos of rice, how much did she pay in total?

- A. \$48
- B. \$52
- C. \$58
- D. \$60
- E. \$64

EXPLANATION

4 kilos bought without the discount equal \$20. A 20% reduction on this \$20 is equal to \$4 (we do 10% and multiply by 2), so \$16 for 4 kilos. By buying 12 kilos, Josephine pays 3 times \$16, which equals \$48.

QUESTION 9

It takes Max three hours to run 30 kilometers. Georges, on the other hand, travels the same distance in 2 hours and 20 minutes. If both are to complete a 15-kilometre race, how long before Max will Georges arrive to the finish line?

- A. 10 minutes
- B. 20 minutes
- C. 30 minutes
- D. 40 minutes
- E. 50 minutes

EXPLANATION

If Max completes 30 kilometers in 3 hours, then he completes 15 kilometers in 1 hour and a half (90 minutes). Georges travels 30 kilometers in 2 hours and 20 minutes, that is, in 140 minutes, so he travels 15 kilometers in 1 hour and 10 minutes (70 minutes). The time difference between them is 20 minutes.

QUESTION 10

A group of four numbers has an average of 14. The first three numbers are 11, 12 and 17. What's the missing number?

- A. 11
- B. 13
- C. 15
- D. 16
- E. 18

EXPLANATION

If 4 numbers have an average of 14, then the total of these 4 numbers is equal to 14 times 4, that is, 56. The addition of the first three numbers equals to 40, so the number 16 is missing in order to reach 56.

QUESTION 11

Peter has a box containing 65 red and blue balls. Counting them, he realizes that there is a ratio of 3 red balls to 10 blue balls. How many blue balls does he have in total?

- A. 15
- B. 20
- C. 30
- D. 45
- E. 50

EXPLANATION

For 13 balls we have three red balls and 10 blue balls. By dividing 65 by 13, you get 5, so there are 15 red balls (5 times 3) and 50 blue balls (5 times 10).

QUESTION 12

Jean has 5 shirts, 3 ties, 6 trousers and 2 coats in his wardrobe. How many different sets can he compose using a garment in each category each time?

- A. 60
- B. 80
- C. 180
- D. 200
- E. 220

EXPLANATION

We multiply all the numbers: 5 times 3 times 6 times 2 is equal to 180.

QUESTION 13

What would be the next number in the following series?

1 ... 10 ... 2 ... 9 ... 3 ... ?

- A. 5
- B. 8
- C. 10
- D. 11
- E. 12

EXPLANATION

$$1 + 9 (10) - 8 (2) + 7 (9) - 6 (3) + 5 (8).$$

QUESTION 14

What would be the next number in the following series?

1 ... 3 ... 7 ... 15 ... 31 ... ?

- A. 63
- B. 75
- C. 83
- D. 92
- E. 94

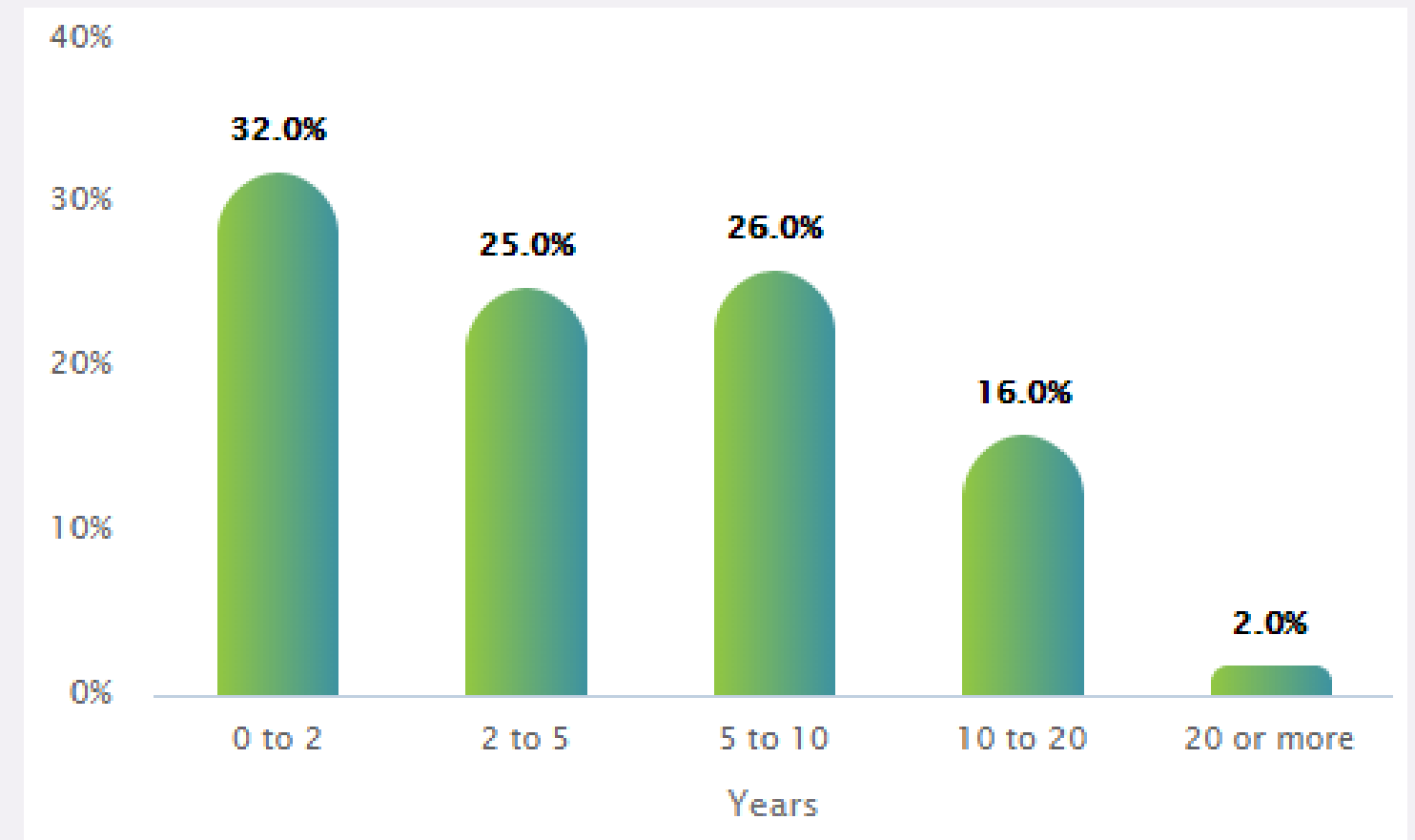
EXPLANATION

$1 + 2 (3) + 4 (7) + 8 (15) + 16 (31) + 32 (63).$

QUESTION 15

If there are 500 employees in [Vista Equity Partners](#), how many of them have worked there for between 2 and 10 years?

- A. 150
- B. 155
- C. 200
- D. 250
- E. 255



EXPLANATION

25% + 26% equals 51% and 51% of 500 equals 255.

QUESTION 16

What is the average salary of program managers, private equity analysts and senior accountants together?

- A. \$86K
- B. \$87K
- C. \$91K
- D. \$93K
- E. \$97K

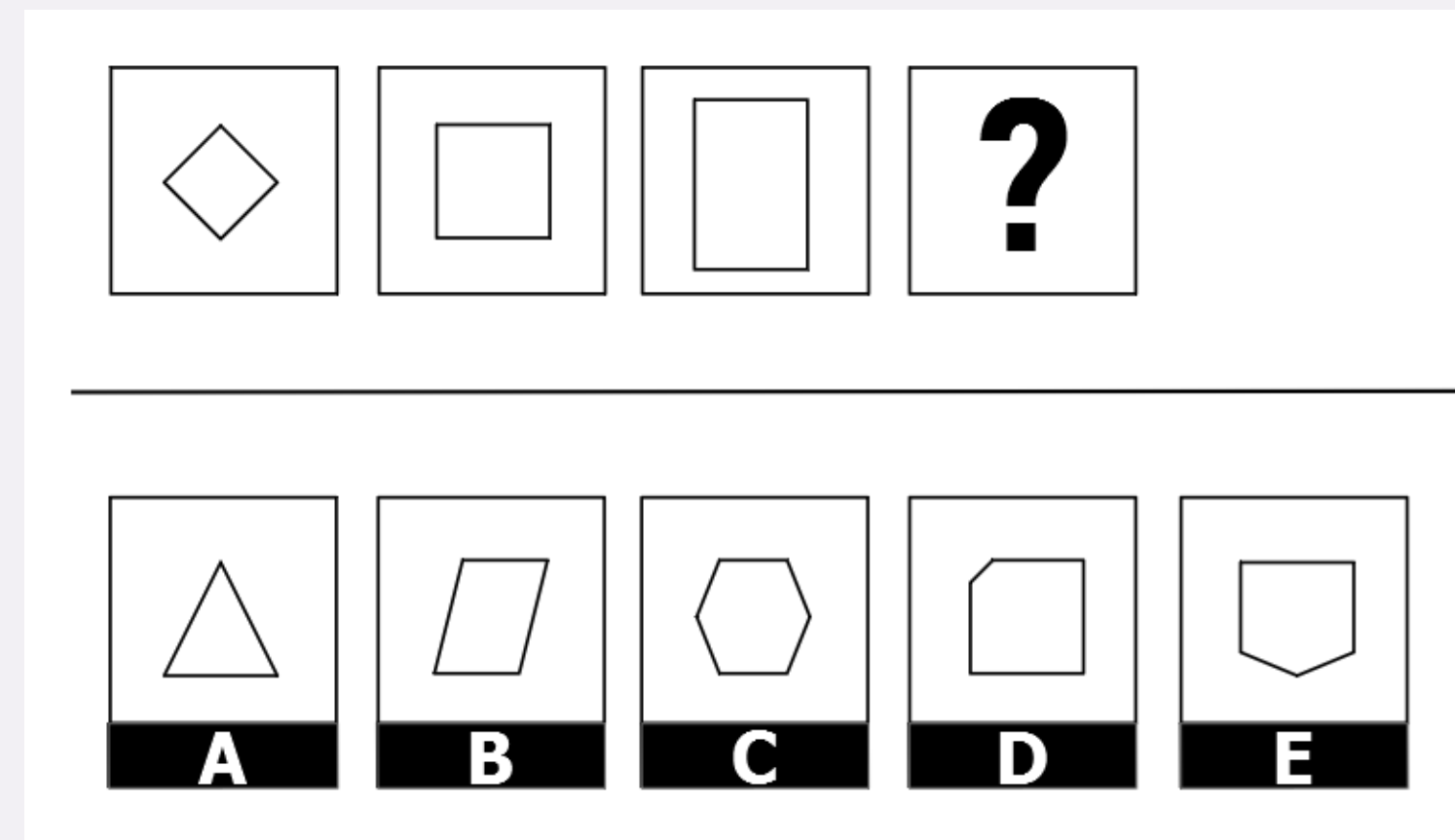
Department	Average Salary	Salary Range
Program Manager	\$108K	\$100K-\$115K
Director	\$84K	\$71K-\$95K
Investor	\$91K	\$55K-\$113K
Credit Analyst	\$51K	\$51K-\$51K
Staff Accountant	\$57K	\$57K-\$57K
Senior Accountant	\$58K	\$47K-\$67K
Finance Manager	\$79K	\$68K-\$89K
Controller	\$133K	\$132K-\$133K
Private Equity Analyst	\$107K	\$98K-\$114K
Marketing Manager	\$63K	\$51K-\$73K

EXPLANATION

The four salaries are added up: $108 + 107 + 58$ makes a total of 273. You divide by three and you get an average of 91.

QUESTION 17

Which of the following boxes should replace the question mark (?) to complete the pattern?

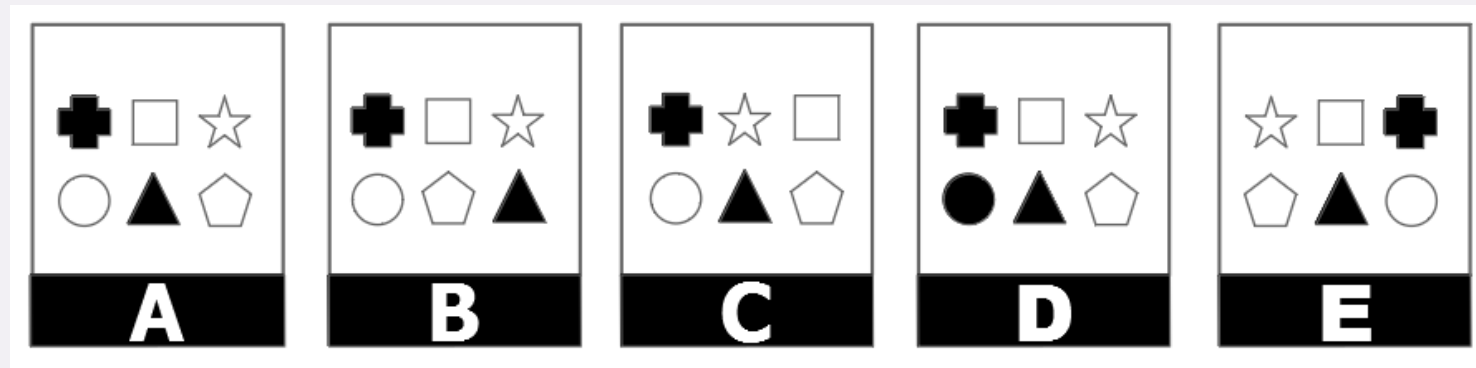


EXPLANATION

All the figures have 4 corners, so the next figure is the parallelogram.

QUESTION 18

Which of the following does not belong?

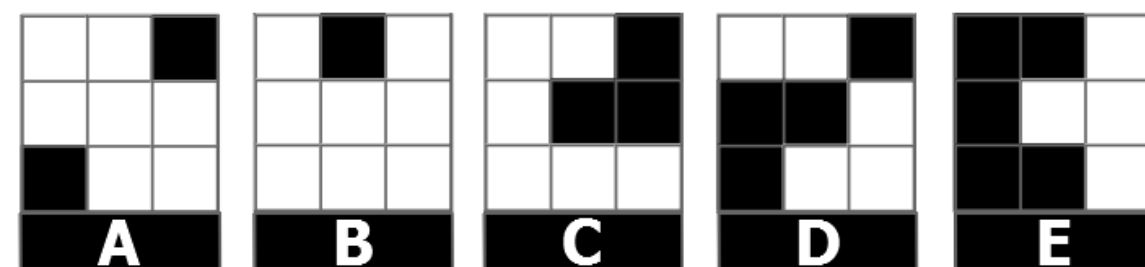
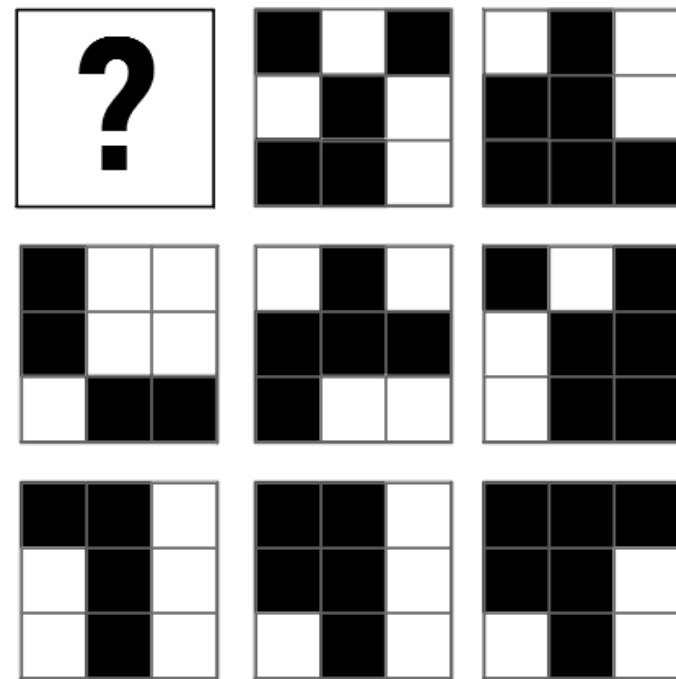


EXPLANATION

2 shapes are colored in each figure, so the intruder is the D.

QUESTION 19

Which of the following boxes should replace the question mark (?) to complete the pattern?



EXPLANATION

In the first column there are always four colored boxes, in the second five and in the third six, so the right proposition is the answer D.

QUESTION 20

Choose the word that is most nearly the OPPOSITE to the word in capital letters.

PASSION

- A. fanaticism
- B. attachment
- C. calm
- D. frenzy
- E. hate

EXPLANATION

The meaning of the word "passion" is to be passionate, emotional and intense, so the nearest opposite is "calm".

QUESTION 21

Choose the word that is most nearly the OPPOSITE to the word in capital letters.

SMART

- A. silly
- B. strong
- C. unhinged
- D. ingenious
- E. intelligent

EXPLANATION

The meaning of the word "smart" is to be cunning, astute and unhinged so the nearest opposite is "silly".

QUESTION 22

What would be the next group of letters in the following series?

AOHV ... BPIW ... CQJX ... DRKY ... ?

- A. ELRZ
- B. EMSZ
- C. FMTZ
- D. ELSZ
- E. ELSY

EXPLANATION

Each letter in the suite follows the alphabetical order with the corresponding letter of the following word:

AOHV ... BPIW ... CQJX ... DRKY ... ESLZ

QUESTION 23

What would be the next group of letters in the following series?

SZ ... YR ... QX ... WP ... ?

- A. NU
- B. OV
- C. MT
- D. LZ
- E. OW

EXPLANATION

The sequel is presented in series of two letters which follow a reverse alphabetical order reversing as well their positions within the couple: the first series begins with the letter S and then in the second element (R), moves into second position and so on:

SZ ... YR ... QX ... WP ... OV

QUESTION 24

Choose the word or words that, when inserted in the sentence to replace the blank or blanks, fits the best with the meaning of the sentence.

Don't miss the visit to Osaka Castle, the Shinsekai district and the climb to the Umeda Sky for a ___ view of the city.

- A. panoramic
- B. low
- C. spherical
- D. circular
- E. golden

EXPLANATION

The missing word is "panoramic."

QUESTION 25

Choose the word or words that, when inserted in the sentence to replace the blank or blanks, fits the best with the meaning of the sentence.

On the occasion of its 30th anniversary, a large ___ of sandwich-pastry stores in Belgium has been ranked as the most ___ sandwiches in the Kingdom.

- A. frame ... best
- B. succession ... bad
- C. chain ... popular
- D. closing ... nice
- E. line ... spicy

EXPLANATION

The missing words are "chain" and "popular."

QUESTION 26

FRONTIER is to COUNTRY as...

- A. MIDNIGHT is to DAY
- B. BOILING is to WATER
- C. INTERCLASS is to WORK
- D. OXYGEN is to ATMOSPHERE
- E. LEG is to ARM

EXPLANATION

"The frontier delimits the end of a country." The corresponding analogy is that "midnight delimits the end of a day."

QUESTION 27

MANIFESTATION is to INSURRECTION as...

- A. CARE is to ADORATION
- B. PRAY is to LOVE
- C. REFUSE is to ACCEPTATION
- D. SICK is to FLU
- E. HATE is to ANGER

EXPLANATION

"Manifestation" has the same meaning as the word "insurrection" but implies a lower degree of intensity. The same relationship in the same order exists between "care" and "adoration."

QUESTION 28

How many of the five items in the left column are exactly the same as the corresponding entry in the right column?

- A. 1
- B. 2
- C. 3
- D. 4
- E. 5

EXPLANATION

Kylie M. Anderson, Timothy C. Harris and Mary D. Petry are written differently.

Terry N. Zapata	Terry N. Zapata
Julie C. Cooper	Julie C. Cooper
Kylie M. Anderson	Kyle M. Anderson
Timothy C. Harris	Timothy C. Harrys
Mary D. Petry	Mary D. Pettry

QUESTION 29

Assume the first two statements are true. Is the final statement: 1) true, 2) false, or 3) uncertain based on the information provided?

Everything that is small is cute.

A kitten is small.

Therefore, a kitten is not cute.

- A. True
- B. False
- C. Uncertain

EXPLANATION

The logical conclusion after combining the first two sentences is that a kitten is cute.

QUESTION 30

Four individuals of different sizes - Elisabeth, Kiera, Guy and Amos - behave according to the following rule: each one trusts exclusively an individual of a higher size than him or herself. We know that Elisabeth only trusts Kiera.

One of the following situations is not possible. Which one?

- A. Amos trusts Kiera
- B. Guy does not trust Amos
- C. Amos only trusts Elisabeth
- D. Guy trusts everyone else
- E. Guy trusts Kiera

EXPLANATION

It is impossible for Amos to trust only Elisabeth since we know that Kiera is bigger than Elisabeth.

**FIND MORE INFORMATION
AND COMPLETE
SIMULATIONS ON
CCATPRACTICETEST.COM**

EXPLORE MORE ON CCAT PRACTICE TEST.COM